

# Blower Vacuum 2500W



## FPBV2500-2

EAN: 3663602627692

Original Instructions - MNL\_FPBV2500-2\_V06\_220926 BX220IM



**WARNING:** Read the instructions before using the product!

# Let's get started...

These instructions are for your safety. Please read through them thoroughly before use and retain them for future reference.



## Getting started...

02

**Technical and legal information**  
Your product  
Before you start

03-14

15

16-21



## In more detail...

22

**Product functions**  
Operation  
Care and maintenance  
Trouble shooting  
Recycling and disposal  
Guarantee  
Technical specifications  
Declaration of conformity

23-24

25-28

29-32

33

34

35-36

37

38

## Safety warnings

**IMPORTANT**  
**READ CAREFULLY BEFORE USE.**  
**KEEP FOR FUTURE REFERENCE.**

### Blower/vacuum safety warnings

1. It is recommended that appliances should be supplied via a residual current device (RCD) with a tripping current of not more than 30mA.
2. Avoid using the machine in bad weather conditions especially when there is a risk of lightning.
3. Children should be supervised to ensure that they do not play with the product.

### Training

1. Read the instructions carefully. Be familiar with the controls and the proper use of the product.
2. Never allow children, persons with reduced physical, sensory or mental capabilities or lack of experience and knowledge or people unfamiliar with these instructions to use the machine. Local regulations can restrict the age of the operator.
3. Never operate the product while people, especially children, or pets are nearby.
4. The operator or user is responsible for accidents or hazards occurring to other people or their property.

## Preparation

1. Obtain ear protection and safety glasses. Wear them at all times while operating the machine.
2. While operating the machine always wear substantial footwear and long trousers. Do not operate the machine when barefoot or wearing open sandals. Avoid wearing clothing that is loose fitting or that has hanging cords or ties.
3. Do not wear loose clothing or jewellery that can be drawn into the air inlet. Keep long hair away from the air inlets.
4. Operate the machine in a recommended position and only on a firm, level surface.
5. Do not operate the machine on a paved or gravel surface where ejected material could cause injury.
6. Before using, always visually inspect to see, that the **shredding means, shredding means** bolts and other fasteners are secure, the housing is undamaged and that **guards** and screens are in place. Replace worn or damaged components in sets to preserve balance. Replace damaged or unreadable labels.
7. Before use, check the supply and extension cord for signs of damage or aging. If the cord becomes damaged during use, disconnect the cord from the supply immediately. **DO NOT TOUCH THE CORD BEFORE DISCONNECTING THE SUPPLY.** Do not use the machine if the cord is damaged or worn.

## Operation

1. Before starting the machine, make certain that the feeding chamber is empty.
2. Keep your face and body away from the feed intake opening.
3. Do not allow hands or any other part of the body or clothing inside the feeding chamber, discharge chute, or near any moving part.
4. Keep proper balance and footing at all times. Do not overreach. Never stand at a higher level than the base of the machine when feeding material into it.
5. Always stand clear of the discharge zone when operating this machine.
6. When feeding material into the machine be extremely careful that pieces of metal, rocks, bottles, cans or other foreign objects are not included.
7. If the cutting mechanism strikes any foreign objects or if the machine should start making any unusual noise or vibration, immediately shut off the power source and allow the machine to stop. Disconnect the machine from the supply and take the following steps before restarting and operating the machine
  - inspect for damage;
  - replace or repair any damaged parts;
  - check for and tighten any loose parts.
8. Do not allow processed material to build up in the discharge zone; this may prevent proper discharge

- and can result in kickback of material through the intake opening.
9. If the machine becomes clogged, shut-off the power source and disconnect the machine from supply before cleaning **debris**.
  10. Never operate the machine with defective **guards** or shields, or without safety devices, for example **debris collector** in place.
  11. Keep the power source clean of debris and other accumulations to prevent damage to the power source or possible fire.
  12. Do not transport this machine while the power source is running.
  13. Stop the machine, and remove plug from the socket. Make sure that all moving parts have come to a complete stop
    - whenever you leave the machine,
    - before clearing blockages or unclogging chute,
    - before checking, cleaning or working on the machine.
    - after striking a foreign object to inspect the machine for damage.
    - if the machine starts to vibrate abnormally, for immediately check.
  14. Do not tilt the machine while the power source is running.
  15. Do not overreach and keep the balance at all times, always be sure of the footing on slopes and walk, never run.

16. Do not touch moving hazardous parts before the machine is disconnected from the mains and the moving hazardous parts have come to a complete stop.
17. Do not connect a damaged cord to the supply or touch a damaged cord before it is disconnected from the supply for the reason that damaged cords can lead to contact with live parts.
18. Keep extension cords away from moving hazardous parts to avoid damages to the cords which can lead to contact with live parts.
19. The operating method shall be followed in the event of accident or breakdown.

### Maintenance and storage

1. When the machine is stopped for servicing, inspection, or storage, or to change an accessory, shut off the power source, disconnect the machine from the supply and make sure that all moving parts are come to a complete stop. Allow the machine to cool before making any inspections, adjustments, etc. Maintain the machine with care and keep it clean.
2. Store the machine in a dry place out of the reach of children.
3. Always allow the machine to cool before storing.
4. When servicing the shredding means be aware that, even though the power source is switched off due to the interlock feature of the guard, the shredding means can still be moved.

5. Replace worn or damaged parts for safety. Use only genuine replacement parts and accessories.
6. Never attempt to override the interlocked feature of the guard.
7. Switch-off the machine before attaching or removing the bag.

### Additional warnings

1. Warning! Do not operate the product near open windows, etc.
2. Do not blow hard objects such as nails, bolts, or rocks.
3. Apply extra care when cleaning debris from stairs or other tight areas.
4. Keep all parts of your body away from the suction/blowing device. Do not remove blockages or jams when the product is switched on. Make sure the switch is off when clearing jammed material. One moment of inattentiveness while operating the product may result in serious personal injury.
5. Carry the product by the handle with the motor off. Handling the product properly reduces the possibility of personal injury.
6. Never use the product standing on steps or a ladder. Do not work above shoulder height.
7. If the product starts to vibrate abnormally, check it immediately. Excessive vibration can cause injury.
8. Always ensure the product is fully assembled before using it. Never attempt to use an incomplete product

- or one fitted with an unauthorised modification.
9. Check the suction/blowing device regularly for damage, and if damaged repair immediately.
10. Do not overload the product.
11. Follow the maintenance and repair instructions for this product. Never carry out any modifications to the product. Information about maintenance and repair is provided in this user manual.
12. If the power cord is damaged, it must be replaced by the manufacturer, its service agent or similarly qualified people in order to avoid a hazard.
13. Do not use extension cords lighter than below and more than 75m:
  - if rubber insulated, ordinary tough rubber sheathed flexible cord (code designation 60245 IEC 53; H05 RN-F with type 2 x 1.0mm<sup>2</sup>);
  - if polyvinyl chloride insulated, ordinary polyvinyl chloride sheathed flexible cord (code designation 60227 IEC 53; H05 VV-F with type 2 x 1.0mm<sup>2</sup>).

### Vibration and noise reduction

To reduce the impact of noise and vibration emission, limit the time of operation, use low-vibration and low-noise operating modes as well as wear personal protective equipment.

Take the following points into account to minimize the vibration and noise exposure risks:

1. Only use the product as intended by its design and these instructions.

2. Ensure that the product is in good condition and well maintained.
3. Use correct application tools for the product and ensure they in good condition.
4. Keep tight grip on the handles/grip surface.
5. Maintain this product in accordance with these instructions and keep it well lubricated (where appropriate).
6. Plan your work schedule to spread any high vibration tool use across a longer period of time.

### Emergency

**Familiarise yourself with the use of this product by means of this instruction manual. Memorise the safety directions and follow them to the letter. This will help to prevent risks and hazards.**

1. **Always be alert when using this product, so that you can recognise and handle risks early.** Fast intervention can prevent serious injury and damage to property.
2. **Switch off and disconnect from the power supply if there are malfunctions.** Have the product checked by a qualified professional and repaired, if necessary, before you operate it again.

### Residual risks

**Even if you are operating this product in accordance with all the safety requirements, potential risks of injury and damage remain. The following dangers can arise in connection with the**

### structure and design of this product:

1. Health defects resulting from vibration emission if the product is being used over long periods of time or not adequately managed and properly maintained.
2. Injuries and damage to property due to broken application tools or the sudden impact of hidden objects during use.
3. Danger of injury and property damage caused by flying objects.



**WARNING! This product produces an electromagnetic field during operation! This field may under some circumstances interfere with active or passive medical implants! To reduce the risk of serious or fatal injury, we recommend persons with medical implants to consult their doctor and the medical implant manufacturer before operating this product!**

## Symbols

On the product, the rating label and within these instructions you will find among others the following symbols and abbreviations. Familiarise yourself with them to reduce hazards like personal injuries and damage to property.

V~	Volt, (alternating voltage)
W	Watt
Hz	Hertz
/min <sup>-1</sup>	per minute
mm	Millimetre
kg	Kilogram
dB(A)	Decibel (A-rated)
m/s <sup>2</sup>	Metres per second squared
yyWxx	Manufacturing date code; year of manufacturing (20yy) and week of manufacturing (Wxx)



Lock / to tighten or secure



Unlock / to loosen



Caution / Warning.



Read the instruction manual.



Wear hearing protection.



Wear eye protection.



Wear respiratory protection.



Wear protective gloves.



Wear protective slip-resistant footwear.



Wear tight-fitted protective clothes.



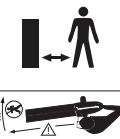
Switch the product off and disconnect it from the power supply before assembly, cleaning, adjustments, maintenance, storage and transportation.



Do not expose the product to rain or wet conditions.



Objects thrown by the product could hit the user or other bystanders. Always ensure that other people and pets remain at a safe distance from the product when it is in operation. In general, children must not come near the area where the product is.



Keep hands away for blowing device! Danger of injuries.



Guaranteed sound power level value in dB





**SWITCH OFF:** Remove plug from mains before cleaning or maintenance.



Disconnect the mains plug if the cord becomes damaged or entangled.



This product is of protection class II. That means it is equipped with enhanced or double insulation.



The product complies with the applicable European directives and an evaluation method of conformity for these directives was done.



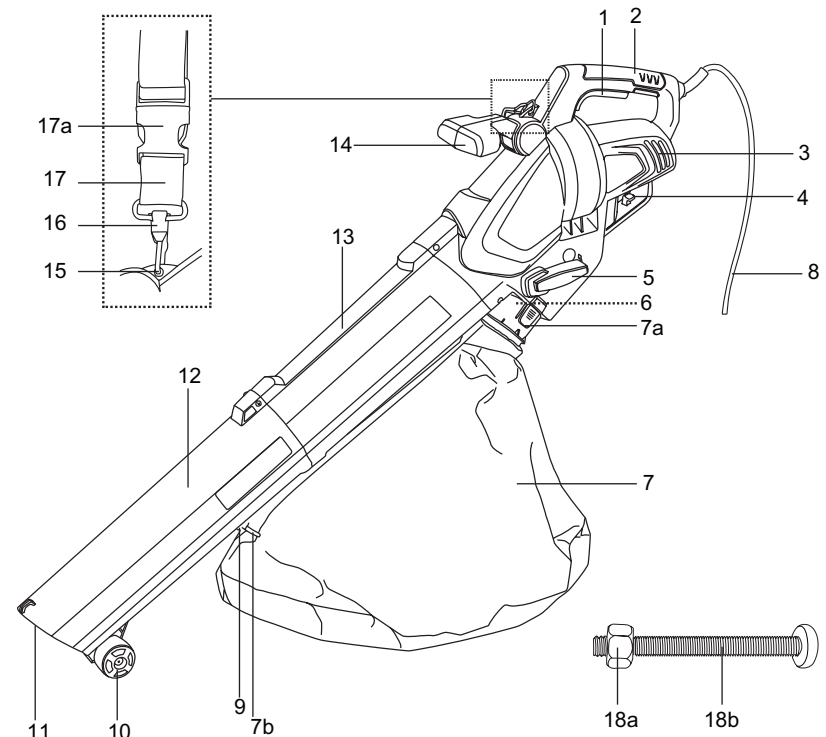
**UK Conformity Assessed.**



WEEE symbol. Waste electrical products should not be disposed of with household waste. Please recycle where facilities exist. Check with your Local Authority or local store for recycling advice

FPBV2500-2 (FP\_Brand Name; BV\_Blower Vacuum)

## Your product



- |                         |                            |
|-------------------------|----------------------------|
| 1. On/off switch        | 10. Guide roller           |
| 2. Main handle          | 11. Nozzle                 |
| 3. Air vents            | 12. Lower tube             |
| 4. Cord retainer        | 13. Upper tube             |
| 5. Mode lever           | 14. Front handle           |
| 6. Outlet nozzle        | 15. Hanging hole           |
| 7. Collection bag       | 16. Clip                   |
| a. Connector            | 17. Harness                |
| b. Hanging loop         | a. Buckle                  |
| 8. Power cord with plug | 18. Mounting set (x4)      |
| 9. Hook                 | a. Nut (M4, pre-assembled) |
|                         | b. Bolt (M4x40mm)          |



## Unpacking

1. Unpack all parts and lay them on a flat, stable surface.
2. Remove all packing materials and shipping devices if applicable.
3. Make sure the delivery contents are complete and free of any damage. If you find that parts are missing or show damage do not use the product but contact your dealer. Using an incomplete or damaged product represents a hazard to people and property.
4. Ensure that you have all the accessories and tools needed for assembly and operation. This also includes suitable personal protective equipment.

## You will need

(items not supplied)

- Slot type screwdriver
- Suitable personal protective equipment

(items supplied)

- 2 x M4 Nut (standby only)

## Assembly



**WARNING!** The product must be fully assembled before operation! Do not use a product that is only partly assembled or assembled with damaged parts!



Follow the assembly instructions step-by-step and use the pictures provided as a visual guide to easily assemble the product!

Do not connect the product to power supply before it is completely assembled!



**NOTE:** Take care of small parts that are removed during assembly or when making adjustments. Keep them secure to avoid loss.



**NOTE:** Pay attention to the alignment of the tubes. In particular observe the orientation of the fixation threads on the tubes.

1. Align the lower tube (12) to the upper tube (13) and insert it all the way to the stop. Secure the connection with the bolt (18b). (Fig. 1)

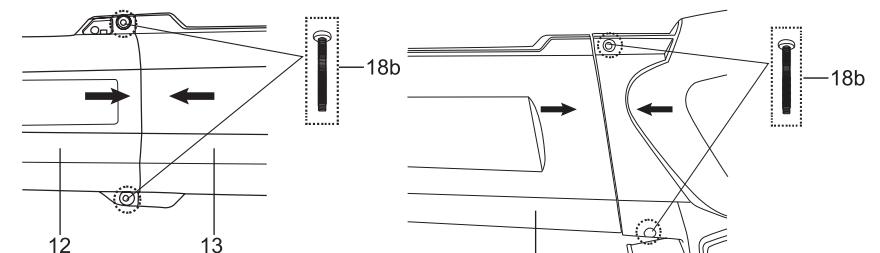


Fig. 1

2. Align the upper tube (13) to the motor unit and insert it all the way to the stop. Secure the tube (13) with the bolt (18b). (Fig. 2)

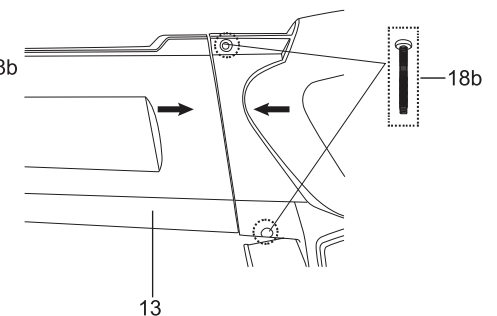


Fig. 2



**WARNING!** Once the tube has been completely assembled it may not be disassembled or removed from the motor unit! Contact a qualified specialist in case the tube must be disassembled, e.g. for removing blockages or replacing damaged tube parts!



**NOTE:** Ensure that all screws are securely tightened with a suitable slot head screwdriver.

3. Attach the hanging loop (7b) on the collection bag (7) to the hook (9) on the bottom side of the lower tube (12). (Fig. 3)

Align the connector (7a) with the outlet nozzle (6) and insert it in place. To detach, press the buttons on both side deeply meanwhile pull it away. (Fig. 4)



Fig. 3

Fig. 4



**WARNING!** Always use the product with its collection bag attached when operating it to protect yourself against dashed debris and to avoid injuries! Do not use this product with a damaged collection bag or without one at all!

## Harness

The harness (17) helps the operator carry the product.

1. Place the harness (17) on one of the shoulders.
2. Attach the clip (16) of the harness (17) to the hanging hole (15) on the upper side of the motor unit. (Fig. 5)

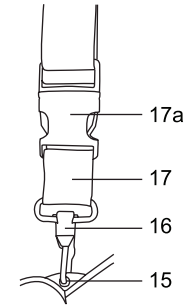


Fig 5



**WARNING!** Always use the product with the harness! Do not carry it only with your hands!

3. Open the buckle (17a) to quickly release the harness (17).

## Front handle

Lift up the front handle (14) until hear a “click”. To fold it back, simply depress it a bit harder. (Fig. 6&7)

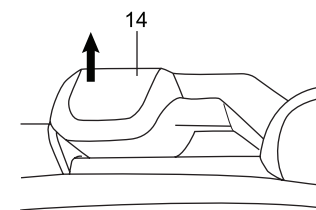


Fig 6

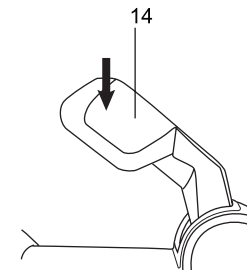


Fig 7

## Connection to the power supply (for UK only)



**WARNING!** Always use a residual current supply (RCD) protected supply. If an extension cord is used, make sure the extension cord is specifically designed for outdoor use and not lighter than H05VV-F or H05RN-F, 2x1.0mm<sup>2</sup> and max 75m.

1. Make sure the on/off switch (1) is in its off position.
2. Connect the power plug to a suitable power source.
3. Now your product is ready for use.

## Connection to the power supply (not for UK)

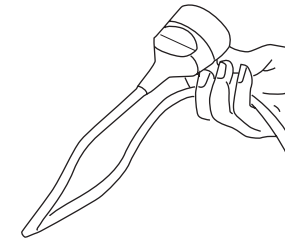
For safety reasons the product is equipped with a short power cord (8). Do not connect the product directly to the power supply using this power cord. A proper extension cord is required for operation. Observe the technical requirements for this product when purchasing an extension cord.



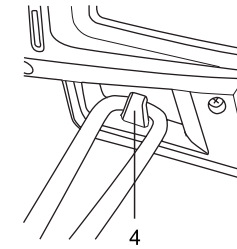
**WARNING!** For your safety, it is required that the plug attached to this product is always connected to an extension cord! The extension cord must be suitable for outdoor use with sockets protected against water splashing! Ensure the extension cord is of the proper size and type for your product ( $\geq 1.0\text{mm}^2$ )!

Always use a residual current supply (RCD) protected supply!

4. Double the extension cord back about a foot from the end, hook the loop over the cord strainer (4) on the bottom side of the motor unit, and gently tug on the cord to ensure that it is firmly secured. (Fig.8&9)

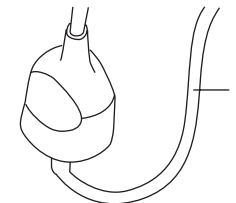


**Fig. 8**



**Fig. 9**

5. Connect the power cord (8) to the socket of the extension cord. (Fig. 10)



**Fig. 10**

6. Make sure not to press the on/off switch (1).
7. Connect the plug of the extension cord with a suitable socket.



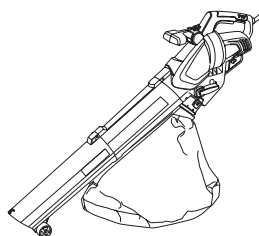
**WARNING!** Check the voltage! The voltage must comply with the information on the rating label!

8. Your product is now ready to be used.

## In more detail...



<b>Product functions</b>	<b>23-24</b>
<b>Operation</b>	<b>25-28</b>
<b>Care and maintenance</b>	<b>29-32</b>
<b>Trouble shooting</b>	<b>33</b>
<b>Recycling and disposal</b>	<b>34</b>
<b>Guarantee</b>	<b>35</b>
<b>Technical specifications</b>	<b>36-37</b>
<b>Declaration of conformity</b>	<b>38</b>



## Intended use

This electric blower/vacuum FPBV2500-2 is designated with a rated input of 2500 Watts.

The product is intended for

- blowing dry leaves for piling up or removing material of hard to reach places, and
- vacuuming dry leaves and shredding them into small piece.

The product must not be used in areas where is health damaging dust or as a wet suction/blowing device.

The product may only be used with the blowing/suction tube fully installed. Avoid wet materials such as leaves and dirt, twigs, branches, pine needles, grass, earth, sand, mulch, cuttings etc. Do not use on wet lawns, grassy areas or fields.

For safety reasons it is essential to read the entire instruction manual before first operation and to observe all the instructions therein.

This product is intended for private domestic use only, not for any commercial trade use. It must not be used for any purposes other than those described.

## Operating mode



**WARNING!** Always turn the product off and let it come to a complete stop before changing the operating mode!

1. Select the operating mode by moving the mode lever (5) to the respective symbol.

2. Move the lever (5) to the  position to use the product as a vacuum. (Fig. 11)

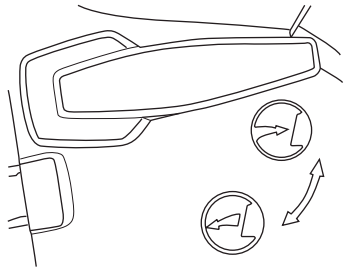


Fig. 11

3. Move the lever (5) to the  position to use the product as a blower. (Fig. 12)

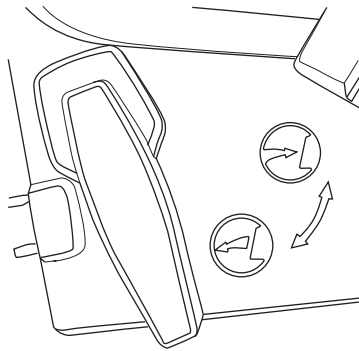


Fig. 12

4. Always ensure that the lever (5) is adjusted in either end positions. You can hear a click once the lever (5) is positioned properly. Do not use it in any other position!

## General operation

1. Check the product, its power cord and plug as well as accessories for damage before each use. Do not use the product if it is damaged or shows wear.
2. Double check that accessories or application tools are properly fixed.
3. Always hold the product on its handle(s)/gripping surface(s). Keep the handle(s)/gripping surface(s) dry and clean to ensure safe support.
4. Ensure that the air vents are always unobstructed and clear. Clean them if necessary with a soft brush. Blocked air vents may lead to overheating and damage the product.
5. Switch the product off immediately if you are disturbed while working by other people entering the working area. Always let the product come to complete stop before putting it down.
6. Do not overwork yourself. Take regular breaks to ensure you can concentrate on the work and have full control over the product.
7. Before switching the product on, check whether it has been assembled correctly and all the moving parts are running smoothly!
8. While working, ensure that the product does not strike hard objects, as this can cause damage.
9. Do not blow any solid bodies such as stones, branches or pieces of branch, fir cones or similar.
10. We recommend slightly dampening surfaces in dusty conditions or using a mister attachment.



**WARNING!** In some countries regulations define at what time of the day and on what special days products are allowed to be used and what restrictions apply! Ask your community for detailed information and observe the regulations in order to preserve a peaceful neighbourhood and avoid committing administrative offences!

### Operating hours

Only operate the product at reasonable hours - not early in the morning, late at night or on weekends/public holidays when people might be disturbed. Inform yourself about local restrictions.

### On/off switch

1. Press the on/off switch (1) to turn the product on.
2. Release the on/off switch (1) to turn the product off.



**WARNING!** The product will continue to work for some time even after the motor has been switched off! Wait until it comes to a complete stop before putting the product down!

### Blowing

1. Before blowing, loosen leaves that are stuck to the ground using a broom or rake.
2. Hold the tube approximately 10 cm above the ground and walk slowly forward using a sweeping motion from side to side. (Fig. 13)



Fig. 13

3. Direct the air stream away from yourself.
4. Ensure that you do not stir up any heavy objects and hurt somebody or damage something.

### Vacuum

1. Push the product in front of you. The guide rollers (10) make it easy to guide the tube along the ground.
2. The leaves will be sucked up into the tube and shredding into small piece by fan blades. And then thrown them into the collection bag (7).
3. Make sure the volume of leaves sucked in at one time is not too large. This will avoid clogging the tube and blocking the impeller wheel.



**NOTE:** Switch the product off and disconnect it from the power supply if it stops suddenly during operation and does not produce any suction. Refer to the instructions below about removing blockages and the "Trouble shooting" section.

### Collection bag

1. Always operate the product with the collection bag (7) attached.
2. Inspect the collection bag (7) each time before use. Do not use it if you detect any damage.
3. Empty frequently during use. Do not wait until the collection bag (7) is completely full. We recommend emptying it when it is half full.



**NOTE:** A full collection bag reduces the performance of this product.

4. Switch the product off and disconnect it from the power supply.
5. Open the collection bag (8) by its zipper and empty the clippings onto a compost heap.
6. Close the zipper before continuing operation.

## After use

1. Switch the product off, disconnect it from the power supply and let it cool down.
2. Check, clean and store the product as described below.

## The golden rules for care



**WARNING!** Always switch the product off, disconnect it from the power supply and let the product cool down before performing inspection, maintenance and cleaning work!

1. Keep the product clean. Remove debris from it after each use and before storage.
2. Regular and proper cleaning will help ensure safe use and prolong the life of the product.
3. Inspect the product before each use for worn and damaged parts. Do not operate it if you find broken and worn parts



**WARNING!** Only perform repairs and maintenance work according to these instructions! All further works must be performed by a qualified specialist!

## General cleaning

1. Make sure the product is switched off, cooled down and disconnected from the power supply.
2. Clean the product with a slightly damp cloth and mild soap. Use a brush for areas that are hard to reach.
3. In particular clean the air vents (3) after every use with a cloth and brush.
4. Remove stubborn dirt with high pressure air (max. 3 bar).



**NOTE:** Do not use chemical, alkaline, abrasive or other aggressive detergents or disinfectants to clean this product as they might be harmful to its surfaces.

5. Check for any damage and wear. Repair damages in accordance with this instruction manual or take it to an authorised service centre before using the product again.



### Collection bag

1. Place the product on an even surface and remove the collection bag (7) in reverse order of assembly.
2. Clean the collection bag (7) after operation by turning it inside out and brushing it.
3. Replace the collection bag with one of the same type if it is damaged.
4. Refit as described.

### Removing blockages



**WARNING! Wear safety gloves when removing blockages! Use proper tools to remove debris, e. g. a wooden stick! Never use your bare hands!**

1. Place the product on an even surface and remove the collection bag (7) in reverse order of assembly.
2. Check the upper tube (13) and lower tube (12) for blockages. Carefully tap the tubes (12, 13) to loosen the blockage.
3. Check the openings on the motor unit for blockages. Remove them with a suitable damp tool or wooden stick if required.

### Spare parts

Use only spare parts and accessories approved by the manufacturer.  
Collection bag – article number (DT8102-710107)

### Power cord

1. If the power cord is damaged, it must be replaced by the manufacturer, its service agent or similarly qualified persons in order to avoid a safety hazard.

### Plug replacement (for UK only)

If you need to replace the fitted plug, then follow the instructions below.

**IMPORTANT:** The wires in the mains lead are coloured in accordance with the following code:

Blue – Neutral Brown – Live

As the colours of the wire in the mains lead of this product may not correspond with the coloured marking identifying the terminals in your plug, proceed as follows. The wire, which is coloured blue, must be connected to the terminal, which is marked with N or coloured black. The wire, which is coloured brown, must be connected to the terminal, which is marked L or coloured red.

Connect Blue to N (Neutral)		13AMP fuse approved to BS 1362
Outer sleeve firmly clamped		Brown L (Live)
		Cable grip



**WARNING! Never connect live or neutral wires to the earth terminal of the plug.**

Only fit an approved 13 Amp BS 1363 or BS 1363/A plug and the correctly rated fuse.

If in doubt, consult a qualified electrician.



**NOTE:** If a moulded plug is fitted and has to be removed take great care in disposing of the plug and severed cable, it must be destroyed to prevent engaging into a socket.

## Repair

This product does not contain any parts that can be repaired by the consumer. Contact a qualified specialist to have it checked and repaired.

## Storage

1. Clean the product as described above.
2. Store the product and its accessories in a dry, frost-free place.
3. Always store the product in a place that is inaccessible to children. The ideal storage temperature is between 10 and 30°C.
4. We recommend using the suitable package for storage or covering the product with a suitable cloth or enclosure to protect it against dust.

## Transportation

1. Switch the product off and disconnect it from power supply before transporting it anywhere.
2. Attach transportation guards, if applicable.
3. Always carry the product on its handles.
4. Protect the product from any heavy impact or strong vibrations which may occur during transportation in vehicles.
5. Secure the product to prevent it from slipping or falling over.

## Trouble shooting

Suspected malfunctions are often due to causes that the users can fix themselves. Therefore check the product using this section. In most cases the problem can be solved quickly.



**WARNING!** Only perform the steps described within these instructions! All further inspection, maintenance and repair work must be performed by an authorised service centre or a similarly qualified specialist if you cannot solve the problem yourself!

Problem	Possible cause	Solution
1. Product does not start	1.1 Not connected to power supply	1.1 Connect to power supply
	1.2 Power cord or plug is defective	1.2 Check by a specialist electrician
	1.3 Other electrical defect to the product	1.3. Check by a specialist electrician
2. Product does not reach full power	2.1 Extension cord not suitable for operation with this product	2.1 Use a proper extension cord
	2.2 Power source (e.g. generator) has too low voltage	2.2 Connect to another power source
	2.3 Air vents are blocked	2.3. Clean the air vents
	2.4 Collection bag full	2.4 Empty collection bag
	2.5 Mode lever in incorrect position	2.5 Select different mode

## Recycling and disposal

The product comes in a package that protects it against damage during shipping. Keep the package until you are sure that all parts have been delivered and the product is function properly. Recycle the package afterwards.

Old products are potentially recyclable under WEEE and do not, therefore, belong in your household rubbish. You are requested to assist us and our contribution to saving resources and protecting the environment by handing in this appliance at an equipped collection centre (if there is one available).



## Guarantee

This product carries a guarantee of 24 months starting from the day of purchase. Please retain your receipt as a proof.

This guarantee specifically excludes losses due to:

- Normal wear and tear, including accessory wear
- Overload, misuse or neglect
- Failure of consumable items (such as batteries)
- Repairs attempted by anyone other than an authorized agent
- Accidental damage caused by foreign objects or substances
- Lack of routine maintenance
- Failure to follow manufacturer's guidelines
- Loss of use of the goods


Due to continuous product improvement, we reserve the right to change the product specification without prior notice.

This guarantee does not affect your statutory rights.

For any inquiries relating to the guarantee please contact your retailer : If you purchased this product in B&Q store or website then call 0333 0143101. If you bought this product in SFX outlet or website then call 03330 112 112

## Technical specifications

### General

- > **Rated voltage:** 220-240 V~, 50 Hz
- > **Rated input:** 2500 W
- > **No load speed  $n_0$ :** 14000 min<sup>-1</sup>
- > **Collection bag capacity:** 45 l
- > **Max. air volume:** 10 m<sup>3</sup>/min
- > **Max. air speed:** 230 km/h
- > **Protection class:** II 
- > **Weight:** approx. 3.52 kg
- > **Dimensions:** 119.5 x 18 x 32 cm

### Sound according

- > **Sound pressure level  $L_{pA}$ :** 86.3 dB(A)
- > **Uncertainty K:** 3 dB(A)
- > **Sound power level  $L_{WA}$  :** 100.3 dB(A)
- > **Uncertainty K** 2.57 dB(A)
- > **Guaranteed power level  $L_{WA}$ :** 104 dB(A)

**Vibration  $a_h$ :** 2.765 m/s<sup>2</sup>

- > **Uncertainty K:** 1.5 m/s<sup>2</sup>

The sound values have been determined according to noise test code given in EN 50636-2-100, using the basic standards EN ISO 11094 and EN ISO 3744.

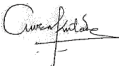
The sound intensity level for the operator may exceed 80 dB(A) and ear protection measures are necessary.

The declared vibration value has been measured in accordance with a standard test method (according to EN 50636-2-100) and may be used for comparing one product with another. The declared vibration value may also be used in a preliminary assessment of exposure.



**WARNING!** Depending on the actual use of the product the vibration values can differ from the declared total! Adopt proper measures to protect yourself against vibration exposures. Take the whole work process including times the product is running under no load or switched off into consideration. Proper measures include among others regular maintenance and care of the product and application tools, keeping hands warm, periodical breaks and proper planning of work processes.

**UK  
CA**  
(UK) DECLARATION OF CONFORMITY

Product		
<ul style="list-style-type: none"> <li>Blower Vacuum 2500W</li> <li>FPBV2500-2</li> <li>Serial number range 000001 to 999999</li> </ul>		
Name and address of the manufacturer or his authorised representative:		
Kingfisher International Products Limited 3 Sheldon Square London W2 6PX United Kingdom		
This declaration of conformity is issued under the sole responsibility of the manufacturer.		
Object of the declaration		
Product	Model	EAN
Blower Vacuum 2500W	FPBV2500-2	3663602627692
The object of the declaration described above is in conformity with the relevant legislation:		
Supply of Machinery (Safety) Regulations 2008 as amended Noise Emission in the Environment by Equipment for Use Outdoors Regulations 2001 as amended Electromagnetic Compatibility Regulations 2016 as amended The Restriction of the use of Certain Hazardous Substances in Electrical and Electronic Equipment Regulations 2012 as amended		
Measured Sound Power Level: 100.3 dB(A) Guaranteed Sound Power Level: 104 dB(A)		
References to the relevant designated standards used or references to the other technical specifications in relation to which conformity is declared:		
EN 60335-1:2012/A2:2019 EN 50636-2-100:2014 EN 62233:2008 EN 55014-1:2017/A11:2020 EN 55014-2:2015 EN IEC 61000-3-2:2019 EN 61000-3-3:2013/A1:2019		
Authorised signatory and technical file holder: Kingfisher International Products Limited 3 Sheldon Square London W2 6PX United Kingdom		
 David Awe Group Quality Director		
		On [10/08/2021]

Manufacturer/Fabricant/Producent/Fabricante/Producător

UK Manufacturer:  
Kingfisher International Products Limited  
3 Sheldon Square  
London  
W2 6PX  
United Kingdom  
[www.kingfisher.com/products](http://www.kingfisher.com/products)

EU Manufacturer:  
Kingfisher International Products B.V.  
Rapenburgerstraat 175E  
1011 VM Amsterdam  
The Netherlands  
[www.kingfisher.com/products](http://www.kingfisher.com/products)

EN	<a href="http://www.diy.com">www.diy.com</a> <a href="http://www.screwfix.com">www.screwfix.com</a> <a href="http://www.screwfix.ie">www.screwfix.ie</a>	To view instruction manuals online, visit <a href="http://www.kingfisher.com/products">www.kingfisher.com/products</a>
FR	<a href="http://www.castorama.fr">www.castorama.fr</a> <a href="http://www.bricodepot.fr">www.bricodepot.fr</a>	Pour consulter les manuels d'instructions en ligne, rendezvous sur le site <a href="http://www.kingfisher.com/products">www.kingfisher.com/products</a>
PL	<a href="http://www.castorama.pl">www.castorama.pl</a>	Aby zapoznać się z instrukcją obsługi online, odwiedź stronę <a href="http://www.kingfisher.com/products">www.kingfisher.com/products</a>
ES	<a href="http://www.bricodepot.es">www.bricodepot.es</a>	Para consultar los manuales de instrucciones en línea, visite <a href="http://www.kingfisher.com/products">www.kingfisher.com/products</a>
PT	<a href="http://www.bricodepot.pt">www.bricodepot.pt</a>	Para consultar manuais de instruções online, visite <a href="http://www.kingfisher.com/products">www.kingfisher.com/products</a>
RO	<a href="http://www.bricodepot.ro">www.bricodepot.ro</a>	Pentru a consulta manualele de instrucțiuni online, vizitați <a href="http://www.kingfisher.com/products">www.kingfisher.com/products</a>
TR	<a href="http://www.koctas.tr">www.koctas.tr</a>	Kullanım kılavuzuna internet üzerinden ulaşmak için <a href="http://www.kingfisher.com/products">www.kingfisher.com/products</a> adresini ziyaret edin